

## Future-oriented packaging systems from HÖRAUF

CartoCan<sup>®</sup>  
liquid



CartoCan<sup>®</sup>  
conic



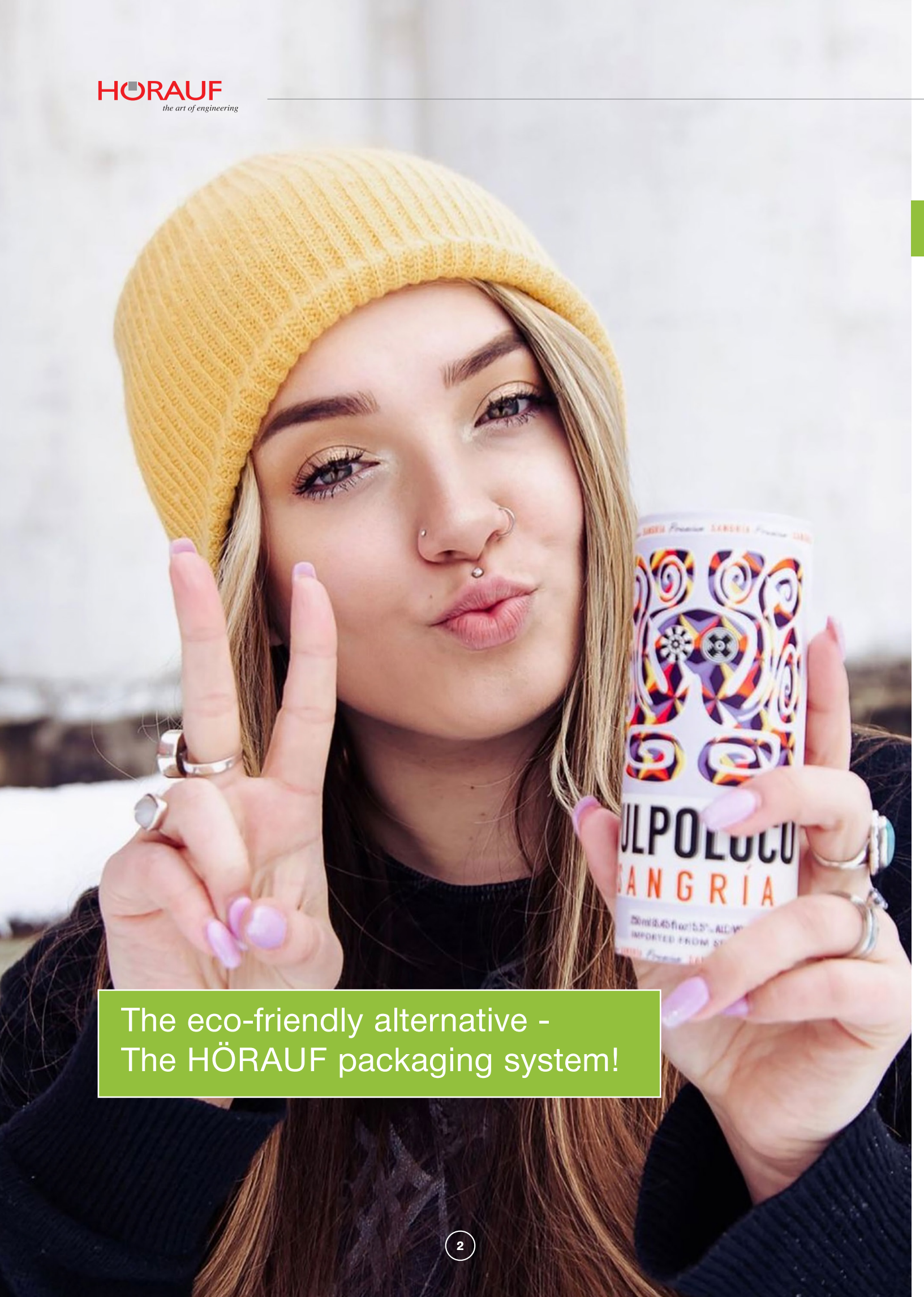
CartoCan<sup>®</sup>  
dry



CapSure<sup>®</sup>



Completely integrated packaging systems –  
consisting of equipment and material –  
from one source.



The eco-friendly alternative -  
The HÖRAUF packaging system!

## HÖRAUF - WHO WE ARE

Located in the south of Germany, we work with highly-educated people to realize tomorrows needs of the packaging service industry.

## HÖRAUF - EXPERIENCE

Founded in 1938, we have since then, designed and built special machines to process paper. We are well aware that efficiency, reliability and accuracy are key factors for our customers. We build our machines with passion.

Main processing parts are driven mechanically, this guarantees a long life time and outstanding robustness and quality of our equipment.

## HÖRAUF - INNOVATION

We see ourselves as partner and inventor. We are focused on packaging trends. Together with you, our customer, we realize new ideas. That guarantees you an advantage in the market. We are the partner for your new packaging developments from the idea, over packaging design to production.

## HÖRAUF - ECO FRIENDLY PACKAGING

Our **CartoCan®** concept is an environmental friendly packaging. We carefully choose our materials, manufacturing practices and energy use to minimize the environmental impact. This is part of our commitment to the environment at every stage.

Products of the **CartoCan®** series are made of sustainable wood fiber, confirmed by the seal of the Forest Stewardship Council. Because of that, the packaging is not only suitable for recycling, but also comparatively light, so emissions due to the transport are avoided. In the production process, less drinking water and energy is needed than the production of a comparable plastic packaging.



## Complete packaging solutions for brand owners...



### CartoCan<sup>®</sup> – The System Equipment and material, from one source

CartoCan<sup>®</sup> is primarily aimed at branded companies looking for a flexible, modern and environmentally friendly system to package their product.

The manufacturer becomes the packaging producer and you will have us for a partner throughout the process. This starts with the design of the packaging, where we will provide you with suggestions and samples, and continues with the consultation and preparation of prototypes, right up to the fully installed and production-ready system – and of course afterwards as well.

Service, spare parts, extensions, design changes and more – we are there for you and support you in all requirements.

CartoCan<sup>®</sup>  
liquid



CartoCan<sup>®</sup>  
conic



CartoCan<sup>®</sup>  
dry



CapSure<sup>®</sup>



# CartoCan<sup>®</sup> liquid



## THE CAN MADE OF PAPER

CartoCan<sup>®</sup> liquid is a unique packaging innovation that offers brand owners unparalleled opportunities for brand differentiation.

No matter whether you are launching a new product or expanding your existing product range, with CartoCan<sup>®</sup> liquid you can highlight your product on the shelf. By changing the can height you can serve different consumer groups or different product applications – from thirst quenching concepts to cocktails.



## CartoCan<sup>®</sup> liquid COMPONENTS & FEATURES

CartoCan<sup>®</sup> liquid is an integrated packaging system consisting of:

- a paper can forming machine
- an aseptic filling and closing machine
- and the specialized packaging material

Output: max. 10.000 CC's/h

CartoCan<sup>®</sup> liquid enables a wide range of applications

- for juices, smoothies
- wellness and energy drinks
- cereal- or soy-based mixed milk and coffee drinks
- alcoholic beverages

## CartoCan<sup>®</sup> liquid PRODUCT BENEFITS

Made from paper, a renewable source, provides the lowest CO<sub>2</sub> footprint.

Long shelf life, due to aseptic filling (without cooling).  
Hermetic tight, for high and low acid products.

Different can sizes are possible.



# CartoCan<sup>®</sup> conic



## THE PACKAGING CUP SOLUTION

CartoCan<sup>®</sup> conic – produce your packaging cup in-house. Paper cup forming equipment and perfectly matching material, depending on your requirements is provided by HÖRAUF.

Your existing filling equipment can be used.



## YOUR MAJOR BENEFITS...

- no transport, no intermediate storage, no handling of preformed cups
- all the advantages of in-house production – complete manufacturing process in one responsibility
- high-quality printing and haptic paper experience ensures high consumer acceptance
- flexibility – different cup heights and shapes can be produced by exchanging tool sets

# CartoCan<sup>®</sup> dry



## THE CONTAINER SOLUTION

CartoCan<sup>®</sup> dry - produce your straight-wall container in-house. This container packaging system provides a great variety of shapes, material specifications and closing possibilities for your paper-based container.

You can create a truly unique packaging, corresponding perfectly in shape and design with your brand and product image.

A wide range of goods can be filled with the CartoCan<sup>®</sup> dry. From powdered milk and cereals to coffee, tobacco and snacks, or non-food.



# CapSure® THE PAPER LID

As people become increasingly aware of the risks associated with non-renewable plastics, and more and more countries are beginning to pass laws banning plastic packaging, a solution is needed. CapSure® is that solution. The patented paper lid CapSure® can be produced in a variety of shapes and sizes.

**CapSure® – the environmentally reclosing system for cups**



1. Splash guard
2. Embossed surface for drainage
3. Drinking hole
4. Venting hole
5. Snap-in groove line

## The BENEFITS...

- easy to apply
- secure and tight fit
- Cup + CapSure® = same material
- convenient usage
- paperbased and eco-friendly
- high-quality appearance
- customizable opening
- fully printable

## Suitable for:

- drinking cups
  - cups for spoonable products like yoghurt
  - ice cream cups
- without compromising on product quality and function.





04/23-500WD

## Future-oriented packaging systems from HÖRAUF



Michael Hörauf Maschinenfabrik GmbH & Co. KG  
Mozartstraße 39-41  
D-73072 Donzdorf - Germany  
Phone: +49 (0) 7162 / 942-0  
Fax: +49 (0) 7162 / 942-510  
[sales@hoerauf.com](mailto:sales@hoerauf.com)  
[www.hoerauf.com](http://www.hoerauf.com)