

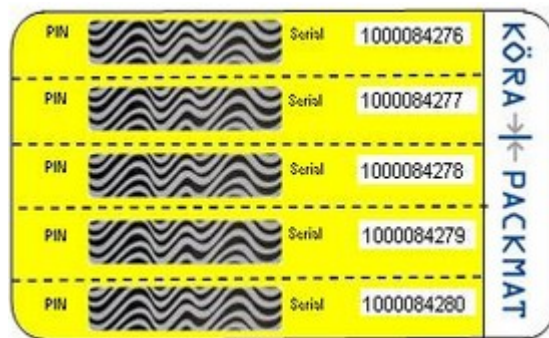


Highlights:

- Economic Personalization of ISO-Cards (85 x 54 mm)
- Speed up to 30,000 cards/hour
- Process of nearly all common card materials
- Highest functionality and security at low cost
- Optimised productivity
- Compact and user-friendly design
- Flexible on process – transversal and longitudinal label application in one running direction (NEL – narrow edge leading)

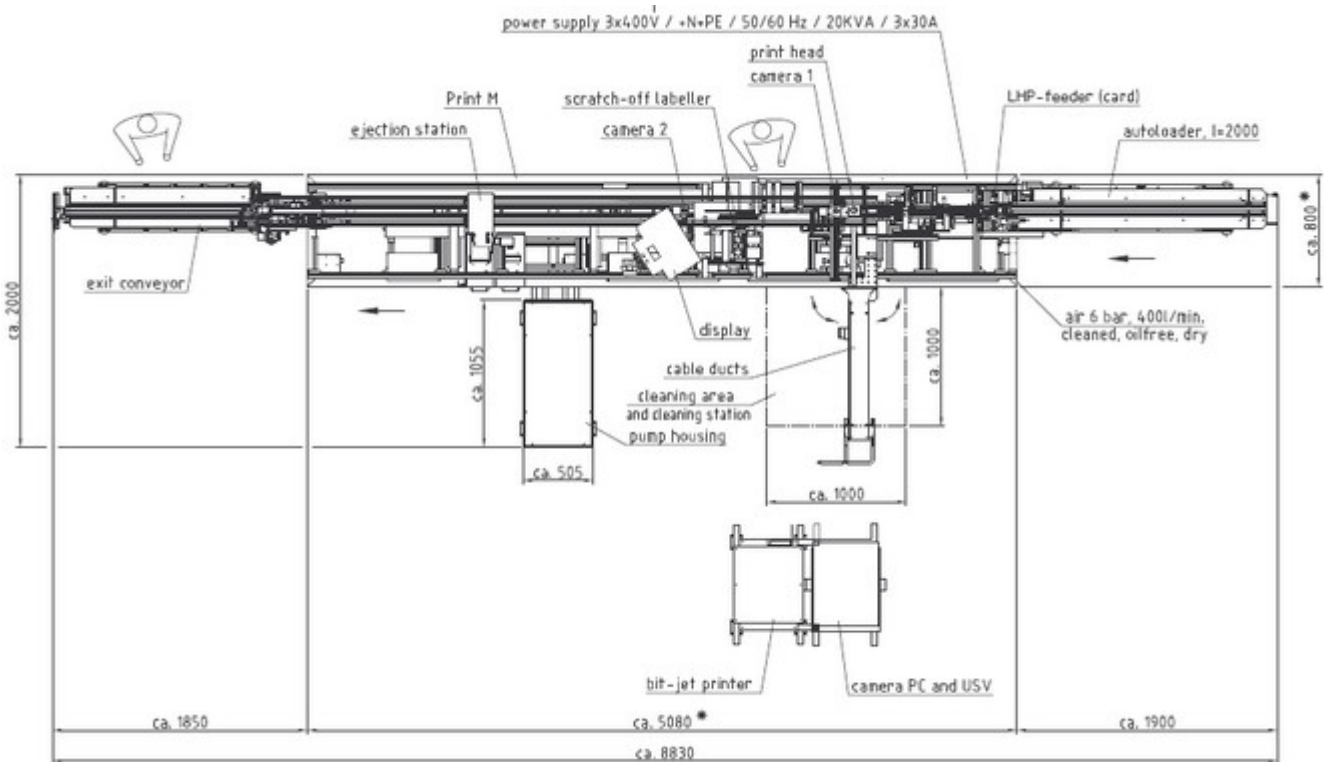
Design & characteristic features:

- Easy machine operation by graphical user interface and touch screen
- Continuous ink-jet printing system (CIJ)
 - up to 52 mm printing width
 - no drying of ink required
- PIN cover with scratch-off label
 - multi panels in one production process possible
- 2-camera system for 100% production monitoring
- ejection station for instant and simple reproduction of bad cards



Print M Technical Data (Standard Configuration)

Print M	
• Format range/ material:	85 x 54 mm (CR-80), package thickness 0.25 – 0.80 mm Almost all common materials
• Performance (depending on configuration and material)	Up to 30,000 cards/hour
• Drive:	Servo drive, infinitely controllable
• Personalization procedure:	Array-Jet printing system
• Fonts / Barcodes:	Allmost all common fonts / barcodes
• PIN-Cover:	Labelling unit for application of scratch-off labels with own control unit
• Card evaluation:	2-Camera system for print and scratch-off control
• Card ejection:	After scratch-off application
• Control:	Panel-PC with touchscreen and graphical user interface
• Supply voltage/ power consumption:	3 x 400 V +/- 5% / 50 / 60 Hz /N /PE; 3 x 30 A Approx. 20.0 kVA
• Pressure / air supply:	-6 bar, dry and oilfree air -consumption approx. 400 l/min. -Pressure dew point +3°C
• Ambient conditions:	-Ambient temperature: 15-25°C -40-65% air humidity (not condensating) -Operating site dust-free and dry
• Dimensions of main machine (WxDxH):	8,830 x 2,000 x 2,600 mm
• Weight:	approx. 2,000 kg



10/2008 Technical modifications reserved