

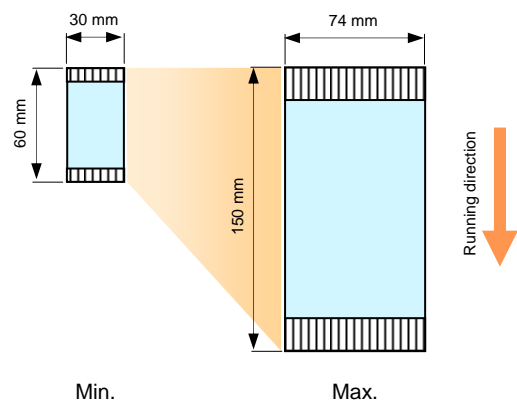
Pouch Cutter for linked bags separation of desiccant, product samples, etc.

Design & characteristic features:

- Special cutting system, with a machine velocity of approx. 250 cycles per minute
- Secure cutting and accurate feeding of linked bags
- Product feed via unwinding roll or external supply
- Rotating cutting system, driven by servo motor
- Precise separation of the products at the printmark by synchronisation with the transport unit.
- Exact positioning of the products onto product conveyor belts
- Feeding height individually adjustable
- Flexible application by modular drive and control techniques
- Complete protective cover

Performance data:

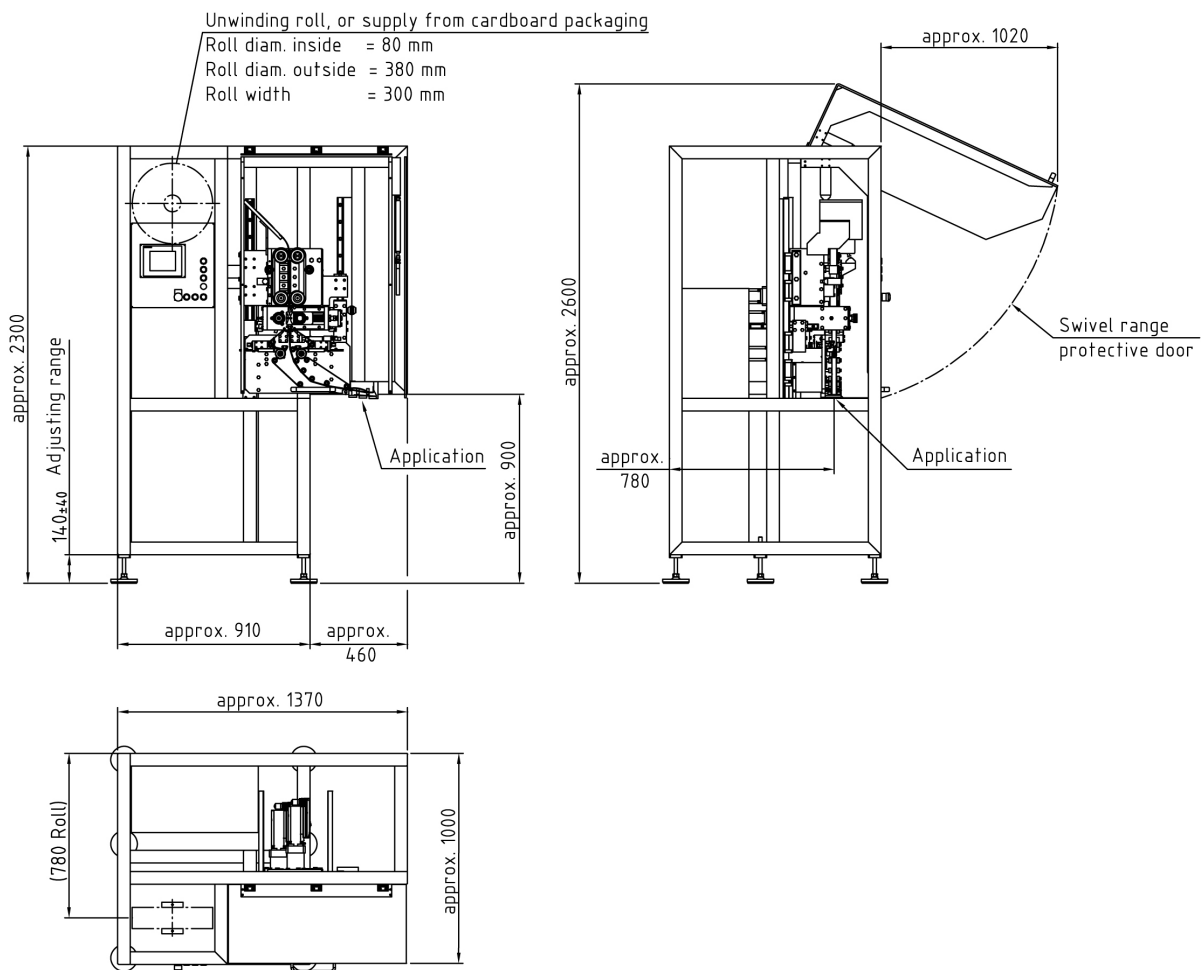
- Speed: max. 250 Products/min. (Depending on product / format) (15.000 / h)
- Format range: Min. 60 x 30 mm; Max. 150 x 74 mm
- Feeding direction: short side leading
- Short setup times
- Infinitely adjustment of format sizes
- **Options:**
- Product control by camera system
- Hot glue applicator unit for application of the bags onto articles and packages
- Scanning of bag chain glue joint
- Integration of a sealing station, for sealing of end and begin of the linked bag chain



PC 300 Technical data (Standard configuration)

Format range (Special formats possible):	min. 60 x 30 mm, max. 150 x 74 (L x B)
Speed (depending on product and format):	Up to 250 Products/min., approx. 15.000 Products /h
Product thickness (depending on product and format):	Max. 6 mm
Product characteristics:	Fine grained, coarse grained, gel-like
Magazing (depending on product):	Roll unwinding or external supply
Drive:	Servo motors, infinitely variable
Control unit:	PLC control with touch screen
Supply voltage / Power consumption:	400 V / 3 Ph. / N / PE / 50 Hz / 5 KVA
Pressure air supply:	Air connection 1/2" / 6 bar
Dimensions (W x L x H) / Weight:	Approx. 1370 x 1000 x 2600 mm approx. 500 kg

Dimensions Standard unit:



02/2009 Subject to Technical modifications